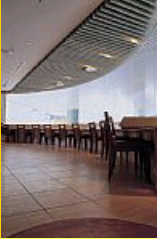




PQHY-P250YHM-A

WY Series 10hp Water Cooled Condensing Unit

R410A Heat Pump



Pictures not to scale

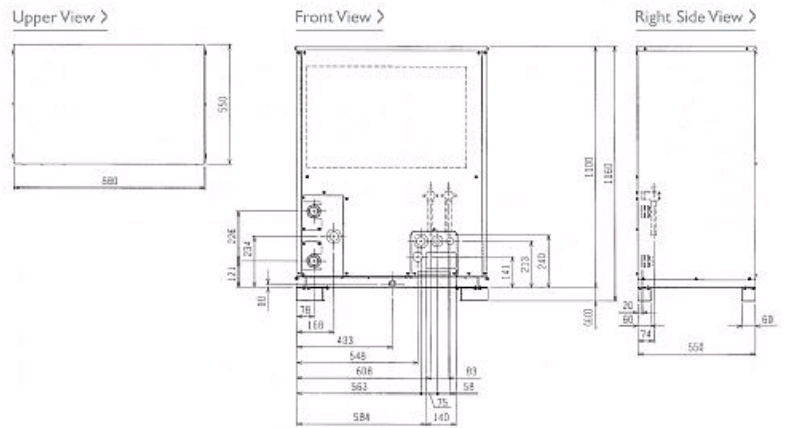
Product Details

PQHY-P250YHM-A	
Capacity (kW):	
Heating (Nominal)	31.5
Cooling (Nominal)	28.0
Power Input (kW) Heating (Nominal)	5.8
Power Input (kW) Cooling (Nominal)	5.45
Max No. of Connectable Indoor Units	25
Noise (dBA)	49
Width - mm	880
Depth - mm	550
Height - mm	1160
Weight - kg	186
Electrical Supply	380-415v, 50Hz
Phase	3
Mains Cable No. Cores	4 + earth
Starting Current (A)	8
Running Current (A) - Heating	8.9
Running Current (A) - Cooling	8.4
Fuse Rating (BS88) - HRC (A)	20

Piping Restrictions	
Total Piping Length (m)	300
Furthest Piping Length (m)	165
Between Outdoor and BC Controller - Length (m)	40
Between Indoor and Outdoor Units - Height (m)	50
Between Indoor and Indoor Units - Height (m)	15

Dimensions

PQHY-P250YHM-A



Telephone: 01707 282880

Email: air.conditioning@meuk.mee.com Website: <http://www.mitsubishielectric.co.uk/aircon>

Mitsubishi Electric reserves the right to make any variation in technical specification to the equipment described, or to withdraw or replace products without prior notification or public announcement.

Tel:
Fax:

